

The strapping machine for folded boxes and wide products

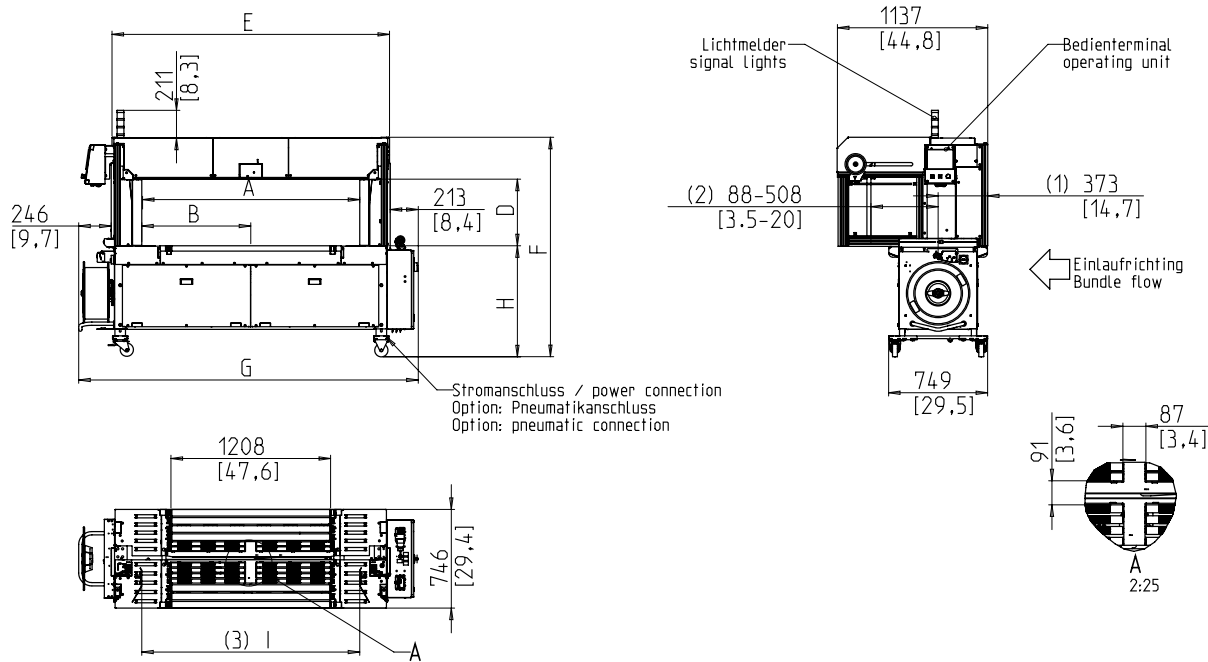


- Robust and extremely low maintenance
- Pneumatic free
- Highest rate of availability
- 5 - 12 mm strap
- Optimal strap guide at the strapping level

EQUIPMENT:

- 2000 bundle recipe
- ASLF 'Anti-Strap-Loss-Function' Constant strap control
- Automatic Strap feed
- Strap width 5 - 12 mm, either
- DAT 'Direct-Access-Technology'
- The exclusive eject function avoids strap jam
- Torque controlled strap tension, adjustable
- Upstream and downstream interlocks
- EPP 'Exact Product Path'
- Conveyor speed steplessly adjustable
- GreenTech energy concept, low power consumption
- MFT 'Mono-Frame-Technology'
- OPTIONAL: Bundle compensator, side mounted
- Bundle stops, optional
- Bundle press, optional
- SAO 'Safe and Open' - Safe without protection doors
- SMART TOUCH – Icon control concept
- Table height steplessly adjustable
- Bundle flow control
- Wear-free, energy saving direct-drive-motors
- Low maintenance and low wear strap arch
- Many specific options available, easily configurable

SMB VERO-C



- (1) Umreifungsebene / strapping level
 (2) Abstand: Paketanschlaege / Umreifungsebene
 distance: bundle stop / strapping level
 (3) Abstand Fuehrungsbleche
 distance guiding plates
- Maße in mm/inch
 dimensions in mm/inch
 Gewicht in kg/lb
 Weight in kg/lb

Zeichnung enthaelt Optionen der SIG-VCS Ausstattungsvarianten

Arch Size WxH	1250x600	1650x600
Sealing head centered	X	X
Order number	x49715	x49716
Total length + Coil	G 2170	2570
Total height	F 1555-1785	1555-1785
Position sealing head	B 700	900
Inner width (arch)	A 1400	1800
Arch width	E 1709	2109
Inner height (with press)	D 505	505
Inner height (arch)	C 640	640
Weight in kg	380	420

TECHNICAL SPECIFICATION:

CAPACITY:

Single strap, bundles/minute up to: max. 32
 At table belt speed in m/s: 0,8
 Based on bundle size l x w in mm: 300 x 210
 Depending on arch size and tension force

BUNDLES:

Width in mm
 Min.: 100
 Max. bundle width depending on arch size
 Length in mm: min. 150
 Height in mm
 Min.: 10
 Max. bundle height depending on arch size
 Weight in kg: max. 50

TRANSPORT SPEED:

m/s: 0,20 - 1,00

STRAP TENSION:

Adjustable with 10 steps
 Automatic strap tensioning
 Tension at bundle in N: max. 325

STRAPPING MATERIAL:

Polypropylene DIN EN 13 394
 Width in mm: 5 - 12
 Thickness in mm: 0,4 - 0,65

SEALING METHOD:

Heat seal. Tensile strength of welded joint is approx. 80% of the breaking strength of the strap

STRAP COIL:

Core ID in mm: 200
 Core OD in mm: 420
 Width in mm: 190 (160,180,200)

POWER SUPPLY:

Wide Range Input 380-520V, 3AC; 47 63 Hz
 Maximum fusing 16A (B-character)
 Protection Type: IP 22

POWER CONSUMPTION:

Power consumption in kW approx.: 0,30

OPERATING CONDITIONS:

Temperature range in °C [°F]: +5 [41] - +45 [113]



SMB SCHWEDE MASCHINENBAU GMBH
 Markgrafenstraße 2 | D-95497 Goldkronach | Germany
 Tel.: +49 (0) 9273 / 982-201 | Fax.: +49 (0) 9273 / 982-100
 www.smb.biz | sales@smb.biz

