

Maximum possibilities at smallest space

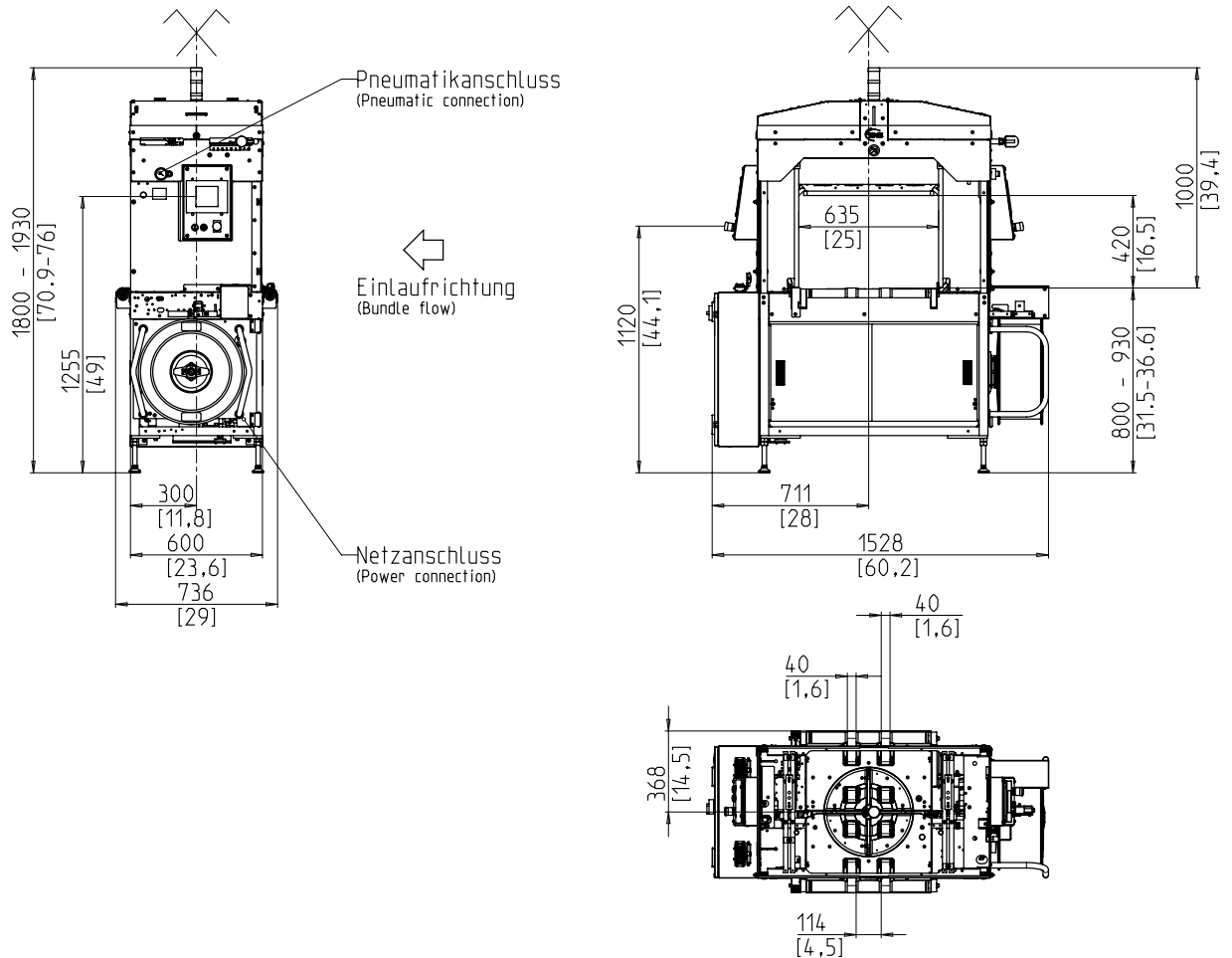


- High capacity
- Very good accessibility
- Low maintenance
- Bundle turn inside the machine

### EQUIPMENT:

- Fume dissipation
- Strap ejection
- Automatic strap threading
- Strap end detection system with automatic discharge of remaining strap
- Strap cutter
- Automatic strap tensioning, stepless
- Additional operating buttons, opposite to terminal (Start/Stop/Emergency Stop)
- Upstream and downstream interlocks
- Strap detection at strap drive
- Conveyor speed steplessly adjustable
- Signal light tower: operation and failure
- Bundle stops, no contact with bundle when clearing the bundle, with quick adjustment
- Bundle press at both sides of the strapping line
- Two plexidoors with safety switch
- Sliding doors
- Sealing head drive, servo driven
- PLC control
- Electrical coil brake
- Quick-change device for strap dispenser
- Table height steplessly adjustable
- Table top hinged
- Touchscreen operation terminal
- Bundle flow control
- Low maintenance and low wear strap arch

# SMB N5EK



## TECHNICAL SPECIFICATION:

### CAPACITY:

Single strap, bundles/minute up to:	40
Parallel strap, bundles/minute:	20
Cross strap, bundles/minute:	18
At table belt speed in m/s:	0,8
Based on bundle size l x w in mm:	300 x 210

### BUNDLES:

Width in mm:	200 - 560
Length in mm:	min. 170
Height in mm:	10 - 400
Bundle diagonals at cross strapping in mm:	max. 560
Bundle length at cross strapping in mm:	min. 200
Weight in kg:	max. 25

### TRANSPORT SPEED:

Feed side, approx. m/s:	0,30 - 0,95
Discharge side, approx. m/s:	0,40 - 1,05

### STRAP TENSION:

Automatic strap tensioning, stepless, depending on height of bundle	
Strap tension in N:	max. 220
Tension path in mm:	max. 130

### PRESS BAR PRESSURE:

max. in N:	500
at 6 bar	

### STRAPPING MATERIAL:

Polypropylene DIN EN 13 394	
Width in mm:	4,8 - 5,2
Thickness in mm:	0,4 - 0,47

### SEALING METHOD:

Heat seal. Tensile strength of welded joint is approx. 80% of the breaking strength of the strap

### STRAP COIL:

Core ID in mm:	200
Core OD in mm:	420
Width in mm:	190 (160,180,200)

### POWER SUPPLY:

200-440V; 3 AC; 50Hz;

### POWER CONSUMPTION:

Total consumption approx. in kW:	1,5
----------------------------------	-----

### PNEUMATICS:

Operating pressure in bar:	6
Air consumption per cycle in l (free air):	10

### WEIGHT:

Total weight approx. in kg:	540
-----------------------------	-----

### OPERATING CONDITIONS:

Temperature range in °C [°F]:	+10 [50] - +40 [104]
-------------------------------	----------------------



**SMB SCHWEDE MASCHINENBAU GMBH**  
 Markgrafenstraße 2 | D-95497 Goldkronach | Germany  
 Tel.: +49 (0) 9273 / 982-201 | Fax.: +49 (0) 9273 / 982-100  
 www.smb.biz | sales@smb.biz