



The universally applicable turntable

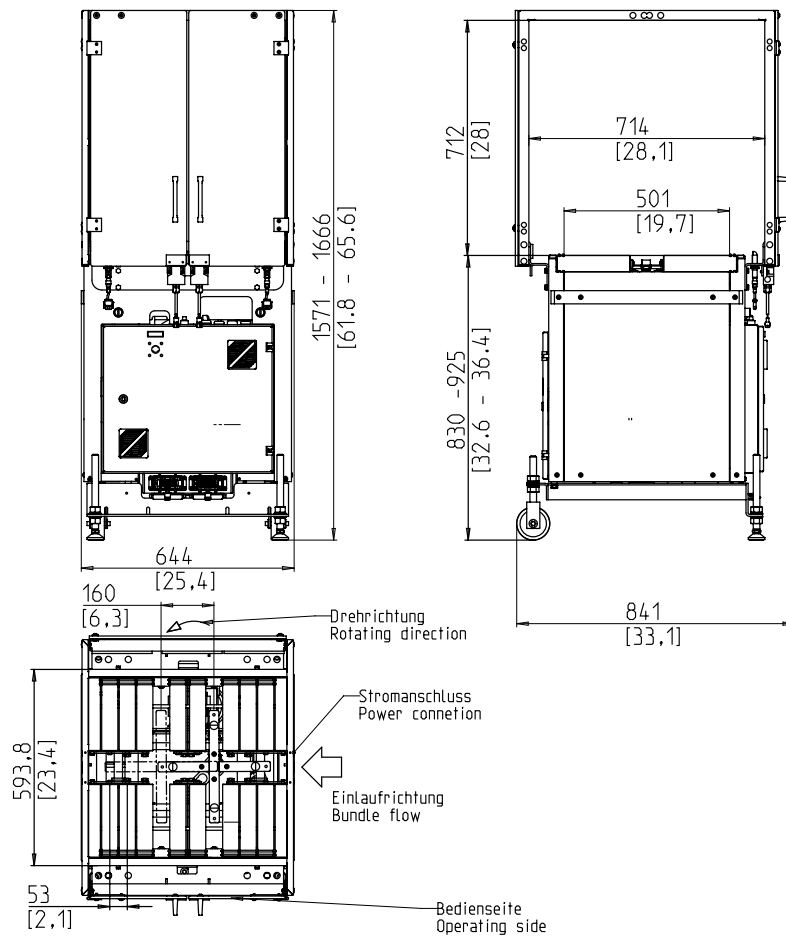


- Soft turn of the bundles
- High capacity
- Low maintenance
- Low wear

EQUIPMENT:

- Upstream and downstream interlocks
- Power cable, length 3m
- Two plexidoors with safety switch
- Soft bundle turn can be activated
- Table height steplessly adjustable
- Many specific options available, easily configurable

SMB V74



TECHNICAL SPECIFICATION:

CAPACITY:

Bundles/minute:	40
At table belt speed in m/s:	1

BUNDLES:

Width in mm:	min. 240
Length in mm:	min. 240
Bundle diagonals in mm:	max. 500
Optional max.:	600
Weight in kg:	max. 25

TRANSPORT SPEED:

m/s:	0,4 - 1,0
------	-----------

POWER SUPPLY:

208-500V; 3 AC; 50/60Hz;
Special voltages available on request
TN and TT network

POWER CONSUMPTION:

Power consumption in kW approx.:	0,6
----------------------------------	-----

WEIGHT:

Total weight approx. in kg:	180
-----------------------------	-----

OPERATING CONDITIONS:

Temperature range in °C [°F]:	+10 [50] - +40 [104]
-------------------------------	----------------------



SMB SCHWEDE MASCHINENBAU GMBH
Markgrafenstraße 2 | D-95497 Goldkronach | Germany
Tel.: +49 (0) 9273 / 982-201 | Fax.: +49 (0) 9273 / 982-100
www.smb.biz | sales@smb.biz